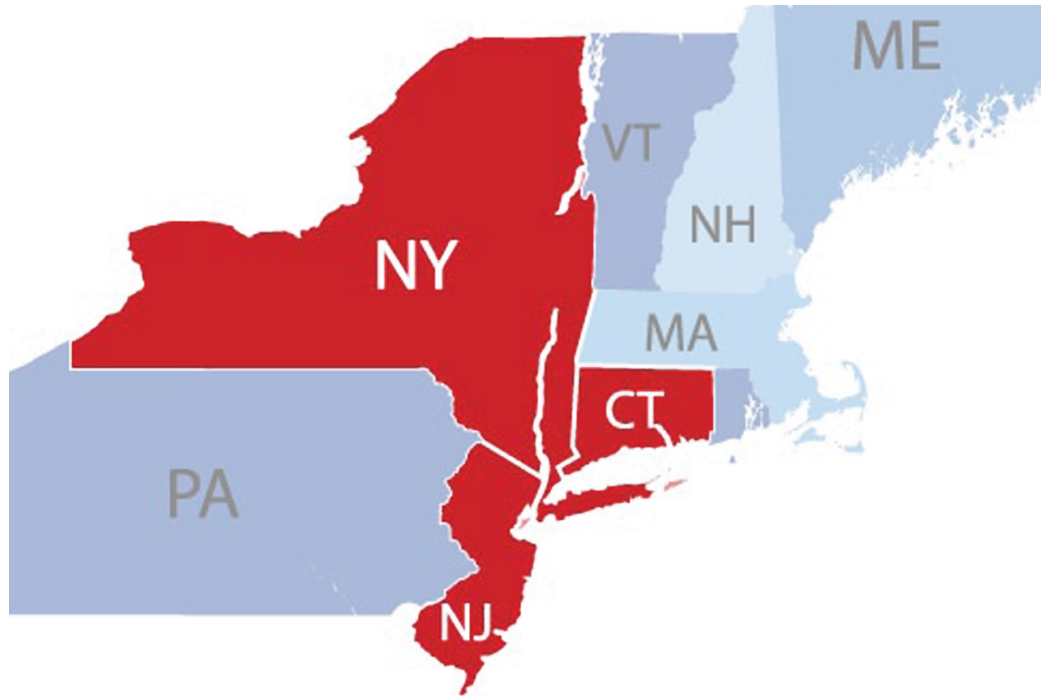


DAMAGE

Over **\$1.2 million** people were affected in the Tri-State region.



Over **800,000** homes damaged.

MONEY SPENT

Build it Back received **\$1.7 billion** in CDBG-DR funds



NY Rising Housing Recovery Program received over **\$1 billion** in CDBG-DR funds.



RREM received over **\$600 million** in CDBG-DR funds..



MONEY DISBURSED

Of the 14,000 NY Rising applicants, less than 10% have received final payment needed in order to complete construction.





BiB Applicants total over 20,000

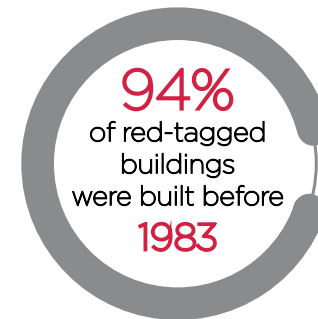
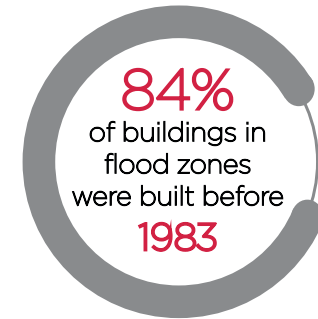
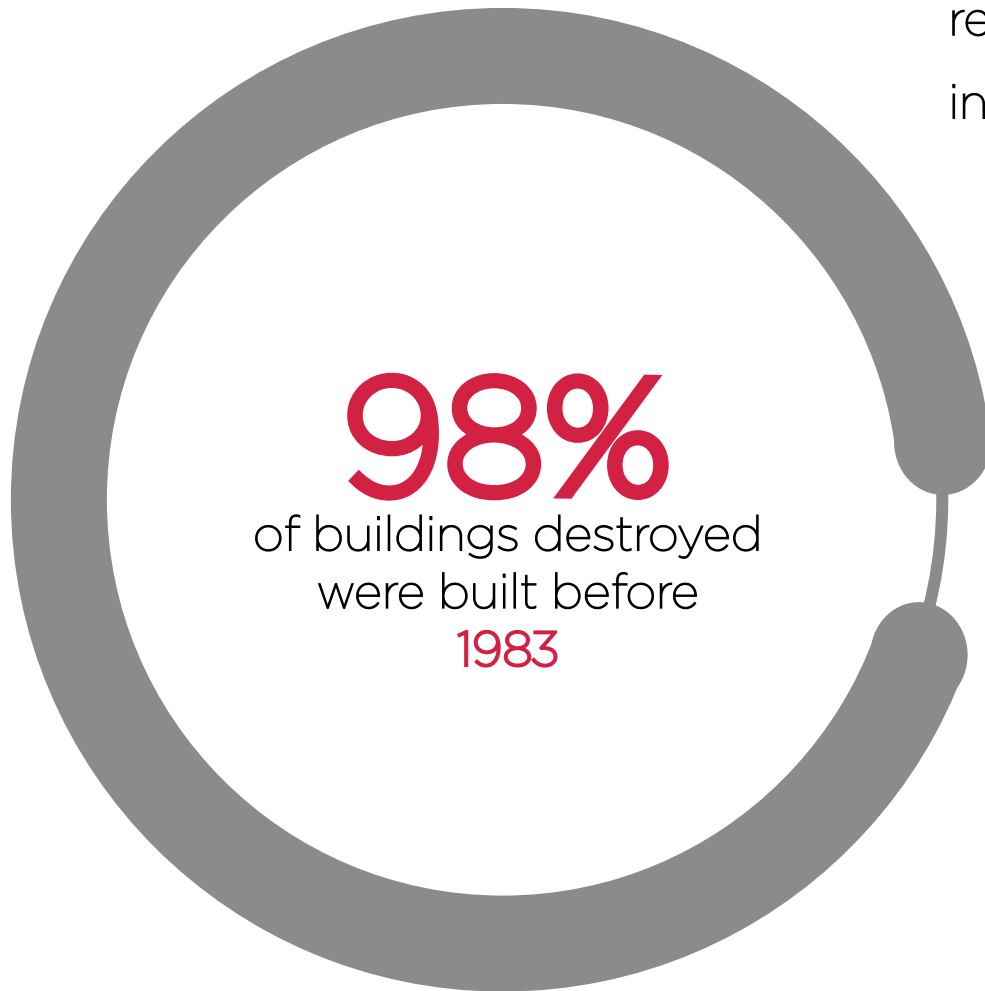
Less than 10% of these have started construction



Around 5% have completed construction



New York City incorporated floodproofing requirements into the Building Code in **1983**



Climate change and disasters will continue to affect us.
We must all become resilient: socially, economically, and physically.

THE ELEVATED STUDIO



Who are we?

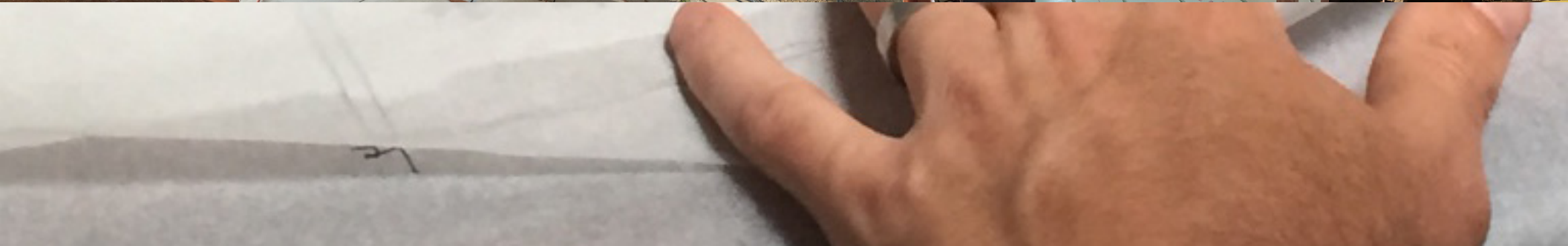
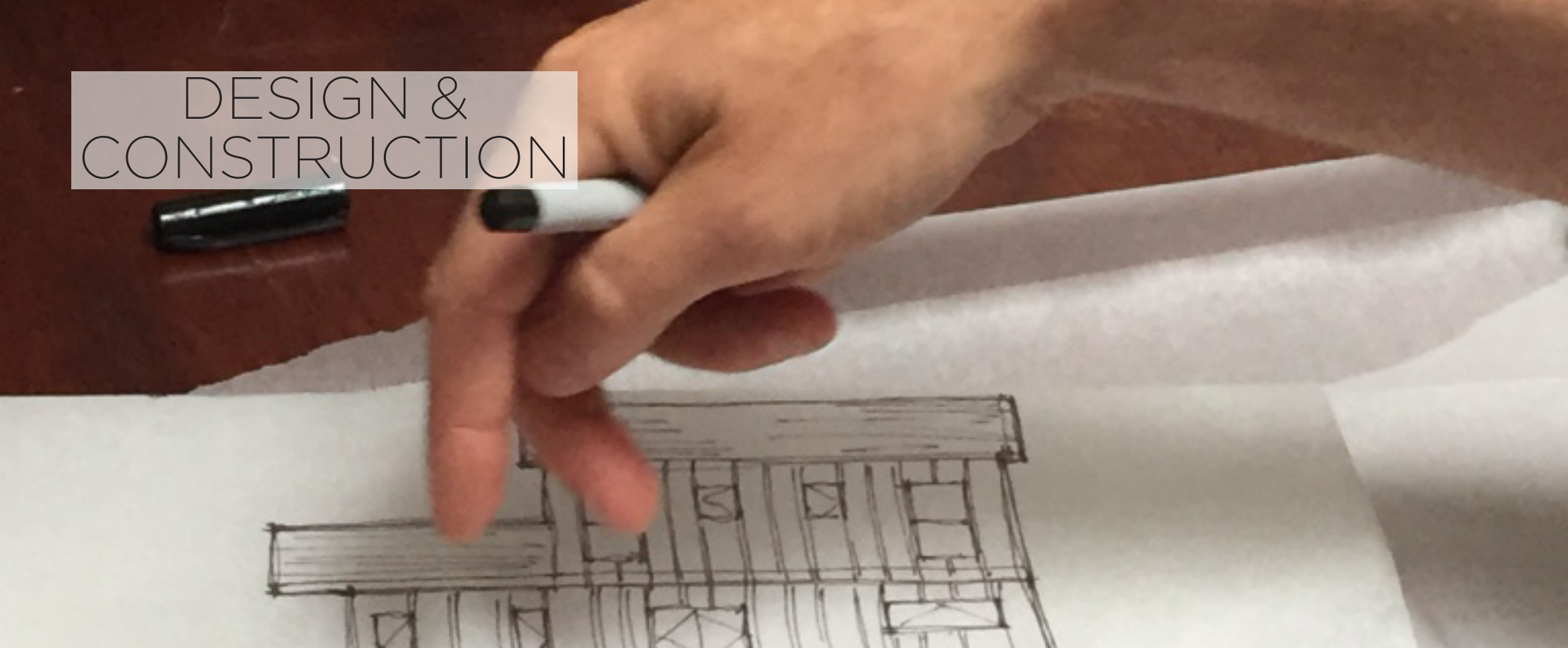
We are an architecture nonprofit, one of the few, that seeks to promote social equality by expanding access to values-driven design that helps individuals and communities achieve economic and physical resilience and sustainability.

What do we do?

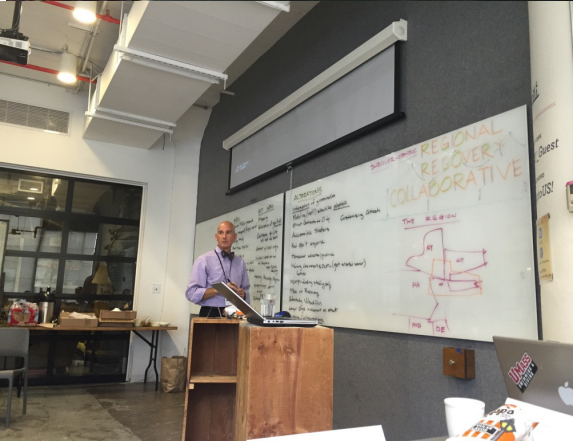
Right now we are focusing on the recovery efforts to homeowners and communities post-Sandy. We work in all the regions receiving CDBG-DR funds, including the greater New York City area, Long Island, and New Jersey. We work with homeowners receiving federal grants on a fee-for-service basis to assist them in all stages of the design and construction process. We work with local officials and communities to assist in comprehensive recovery, aiding in planning and policy recommendations.



DESIGN & CONSTRUCTION



EDUCATION & ADVOCACY





WE SEE A BEAUTIFUL PLACE!

