



20

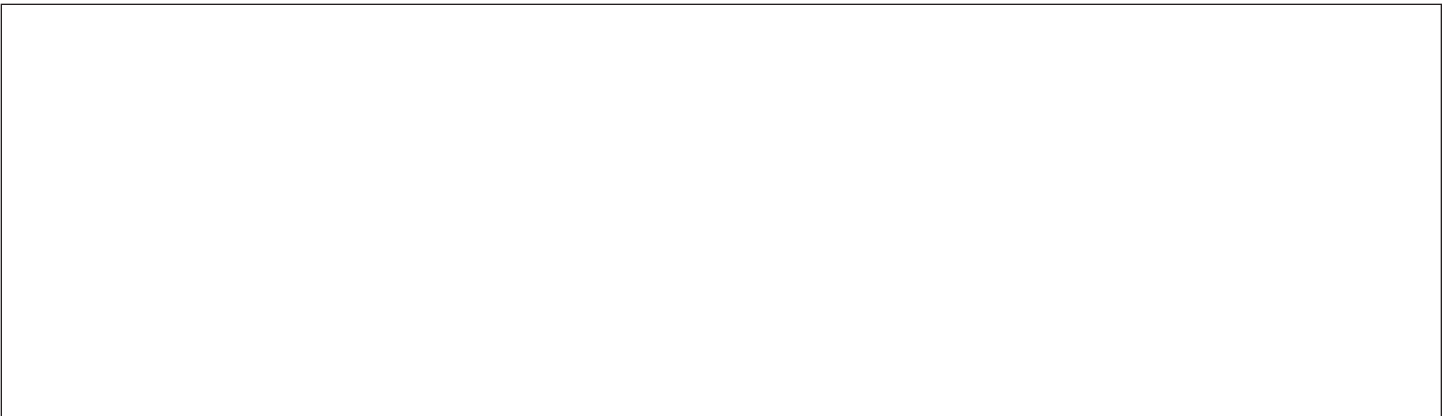
16

THE
ELEVATED
STUDIO



OUR MISSION

is to promote social equality by expanding access to values-driven design that helps individuals and communities achieve economic and physical resilience and sustainability.



OUR VISION

We believe that every member of a community should have access to and benefit from design excellence.

By educating professionals, we empower those who are trained to lead a community towards excellence.

By educating the property owner, we empower those directly affected to make wise and appropriate decisions towards their environment.

By collaborating with like-minded agencies, we share ideas to create a larger network of professionals to support the communities that we work in.

By engaging government agencies, we share the ideas generated by the residents and businesses of their jurisdiction that aim to implement the desires and needs of the community.

We believe that social, economic and physical resilience, and sustainability are intertwined and within reach to all.

EMPOWER. The word as it looks on a page is striking. As a definition, it is: “the giving of an ability; enablement or permission”. As a pragmatic action, it allows the individual or community the power and ability to recover or grow by using our team to guide them. We feel that the process is mutually rewarding. Our clients can make educated, appropriate decisions about their project and its impact on their lives. We at The Elevated Studio work tirelessly to empower our clients, communities, and our partners through the challenges they face. Whether that challenge is starting or completing their recovery post-disaster; increasing their capacity by providing new space; providing the tools through education on how they can better their own lives or advocate on their behalf to move through a recovery program., our team has been and will continue to be a positive force in our clients’ completed projects. We look forward to expanding our role in the resilient



and sustainable built environment so that each of our clients and their constituency can achieve their equal place in the world.

Brian

WHO WE ARE

We are an architecture and advocacy nonprofit, one of the few, that seeks to promote social equality by expanding access to values-driven design that helps individuals and communities achieve economic and physical resilience and sustainability.

Our commitment is to build a better place for all.

WHAT WE DO

We focus our efforts on individuals and communities in crisis whether it is due to a natural disaster or needed services lacking within a community. Regardless of the project typology, so long as the need for positive design intervention, community engagement or financial sustainability, our service approach will provide the appropriate solution that benefits the user.

Our goal is to responsibly connect the relationship between residents, their communities and the built and natural environment in a timeless way. We seek a solution that employs education and collaboration to elevate community after community to achieve excellence.

MANAGEMENT

Our client management services run the spectrum from social service through construction observation throughout the entire disaster recovery process. By assisting our clients from initial intake through certificate of occupancy, we provide them with a survivor-centric, holistic recovery process.

ADVOCACY

With the reality of climate change, it is imperative that we plan for the future. We advocate for resilient policies that consider how climate change will affect the region.

DESIGN

We are one of the few nonprofit design organizations that can offer architectural services on a fee-for-service basis. We are the only nonprofit design organization working on Hurricane Sandy recovery.

EDUCATION

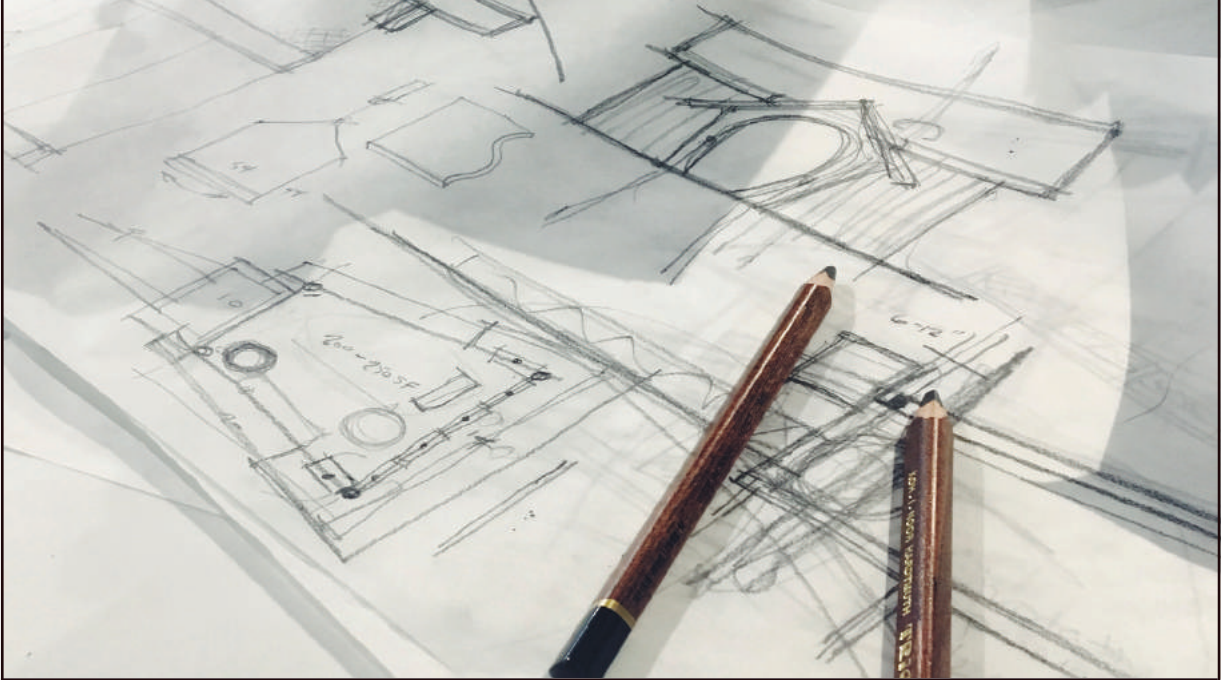
Through community charrettes, REDC clinics, and educational lecture series for residents, case managers, and local jurisdictions, we aim to reach a larger population than our clients.





OUR WORK

The recovery work that we have provided for the last few years has followed our Resilience through Education and Design Clinic (REDC) program model. Whether the solution is for a repair, an elevation, or a full reconstruction of a property damaged by a severe weather event, we continually support our clients with design, advocacy and construction observation services throughout their recovery.



The Elevated Studio is structured into two studios: one that focuses on **recovery**, and one that focuses on **civic works**.



A photograph of a white house with a damaged window and debris in the foreground, illustrating disaster recovery. The house has a grey roof and a white exterior. A window with a white frame is visible, with a dark spot on the glass. The foreground is filled with sand and debris, including a white plastic chair and wooden planks. The sky is blue with some clouds.

DISASTER RECOVERY

We believe that architects and other allied design professionals have a moral and professional obligation to be collaborative leaders in disaster recovery. While we are generally last responders that enter the disaster landscape (typically 3-6 months after response starts); we do become active during the response and relief efforts, helping communities assess the damaged environment and preparing for recovery. It is our duty to reconstruct the built environment responsibly, resiliently, sustainably; guiding the communities we work with to become better and more prepared for future events. Our experience highlights that the vulnerable populations are profoundly affected by disasters. Disasters provide opportunities to identify and propose corrective measures to benefit our built environment and its relationship with nature. With the reality of climate change, these events and the necessary precautions will become ever more important.

Holistic & Comprehensive Recovery

Social services are an integral part of the post-disaster landscape. With so many personal and individual situations at hand, clients are in need of more than just repairs or rebuild to their home, clients need to repair and rebuild their lives. Through the use of Client Advocates, we have been successful in guiding our clients to the appropriate resources which have proven to be vital to their recovery. These resources vary from mortgage or legal assistance and to mental health. We want our clients to have a single organization supporting their recovery.

We have built trusting relationships with the clients knowing that their information is safe, and will return home as quickly as possible. Client Advocates have an open ear to those we assist, and listen and provide support to a client's need. We provide them with the tools to help them and/or help themselves efficiently. Having someone for the client to go to that is directly connected to their design professional provides the client with a holistic approach to recovery.



Resilience through Education and Design Clinics (REDC)

We developed the REDC as a model multi-faceted program that can be implemented regardless of the type or scale of a natural disaster.

Beginning during the relief phase of a disaster, the first step of the program is to identify architects and engineers that have both an interest and an affinity for long term recovery. These professionals have had months, years or decades working in the community. It is during this phase that we establish training on the process of recovery. This may include understanding resilient design principles, use of CDBG-DR funding, social service programs, and voluntary organizations active in disaster.

Once trained, the next phase is to host and launch a series of free design clinics that are open to small businesses and individual property owners. These clinics are held over a short period of time, usually a long weekend or during the evening to maximize community participation. Upon leaving the clinic, the property owner receives a potential solution that can be further developed by their own design professional, or by one of the professionals that were participating in the clinic.

The last phase of this program is the completion of the recovery. Utilizing the possible solutions from the clinics, the design professional would have an initial analysis of the property and a potential solution that can be further developed. For this phase, it is encouraged that the architect work either for the servicing program, or directly for the property owner.

In previous disasters, we used a scorecard to select the residents that are most vulnerable to future climate events. They may receive available gap-funding, or design grants that allow them to receive professional assistance. We manage this process and oversee all players through design unto construction.

Sandy Recovery through Education Forum

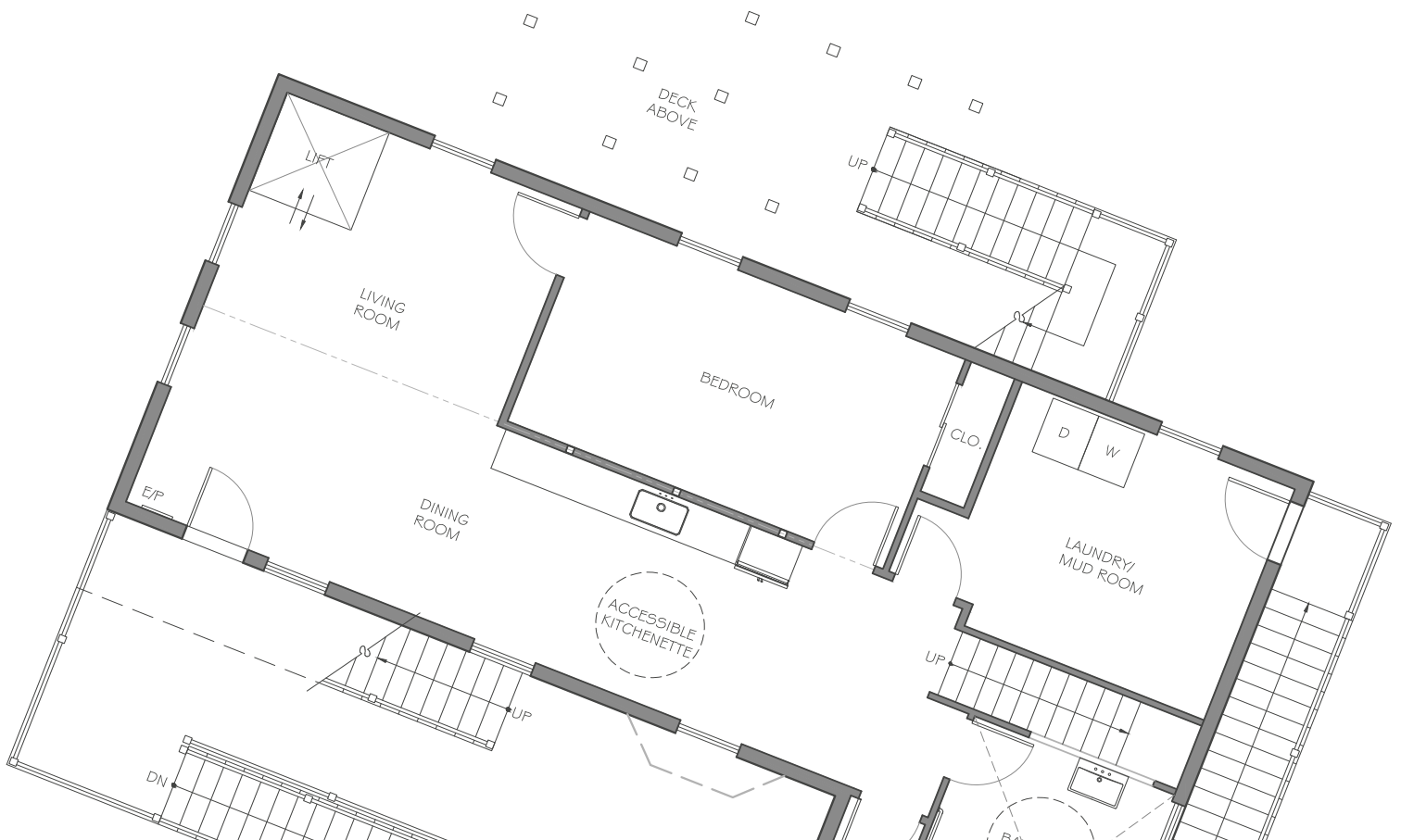
In collaboration with the Nassau and Suffolk County Offices of Community Development, The Elevated Studio was a principal author of a [continuing] series of forums designed to provide homeowners with resources and knowledge that empowers the participant to answer the question, “So what do I do now?” Giving a place for like-minded recovery partners to speak to their services and their strengths, the SRtEF has proven to be one of our more successful education programs. Beginning in early 2015, we have educated well over 3,000 individuals looking for answers towards their recovery.



Universal Design in the Recovery Landscape

The built environment along our coastline has significantly changed over the course of the last three or four decades. While structures built within this time meet or exceed the building codes, the vast majority of remaining structures are older, and not built to current standards. Many were remodeled haphazardly, creating conditions that provide an unsafe environment for its occupants and its neighbors.

Elevating and reconstructing these homes make salient many reasons for accessible and universal design that complement current needs of a population that age in place. It becomes a design professional's charge as educator and "expert" to encourage the resident to plan for accessibility for themselves, their visitors, and any future inhabitants, over the course of their lives and the life of the home.





RECONSTRUCTION

The Elevated Studio was selected as a pre-qualified design service provider for the Governor's Office of Storm Recovery - Individual Housing program. Through the Recon 100 Initiative, a homeowner who meets the criteria set forth by the Program, receives our services at no cost; and has a new home built in place of their older damaged home. The new home is designed to meet the current number of bedrooms, bathrooms, square footage, and meet or exceed the current building, energy and Housing & Urban Development (HUD) Green homes code.



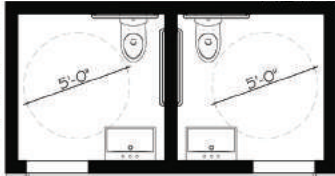
ELEVATION

Similar to the Recon 100 program, The Elevated Studio was selected by the Governor's Office of Storm Recovery (GOSR) to provide design services for homes that met the criteria for optional or mandatory elevation. This initiative affords the homeowner to maintain the existing fabric of the residence, and establish a greater sense of resilience by elevating the home to above the base flood elevation.

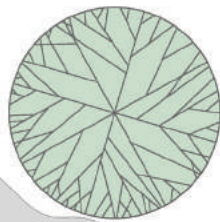
CIVIC WORKS

Design is a tool to be used as a form of positive service to a community in need; what we fondly refer to as humanitarian architecture. We believe that the intertwining of social connectedness, positive economic growth, and a supportive built environment creates the trifecta that our communities need to thrive.

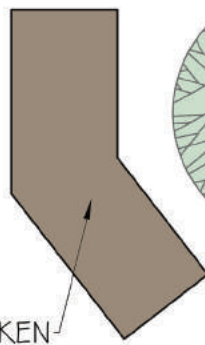
A measurement of this achievement can be found in the civic spaces of the built environment. It is found in the government and non-government offices; in the community centers, the schools, the public facilities, and the health centers. **All are necessary to increase the vitality of the community.** The design professional should be intentional in providing those spaces to ensure they are inherently positive to the people using them. If these spaces have been damaged, they need to be recovered. If these spaces do not exist, they need to be built. If these spaces are underutilized, they need to be enhanced. Our role in the development of civic spaces is a local and global task, one that we will follow where it is needed.



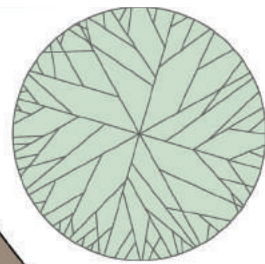
RESTROOMS



TOOLS



CHICKEN
COOP +
ADDT'L BEDS



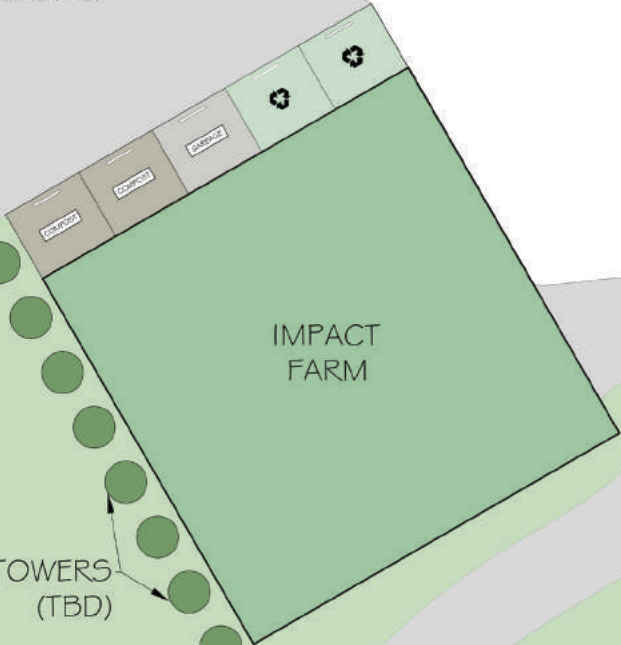
WEED
LIBRARY



ROOT
CELLAR

WATER
STO.

WASH
STATIONS



IMPACT
FARM

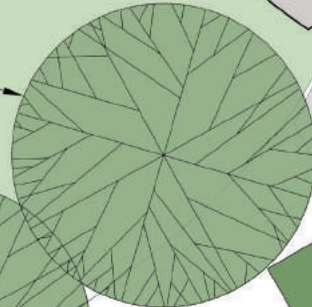
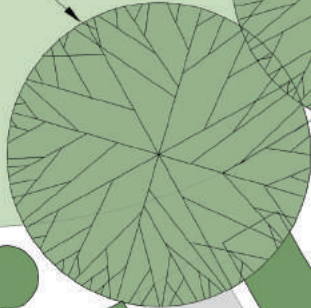
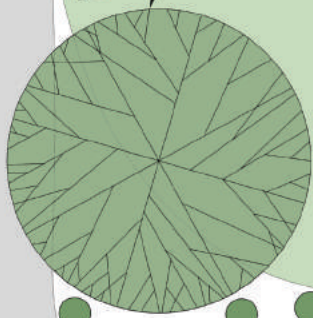
TOWERS
(TBD)

GREAT
LAWN

REMOVABLE
SCREEN

GREAT
LAWN

FRUIT
TREES



KITCHEN

STAGE

BIKE
BLENDER

TEACHING
BEDS



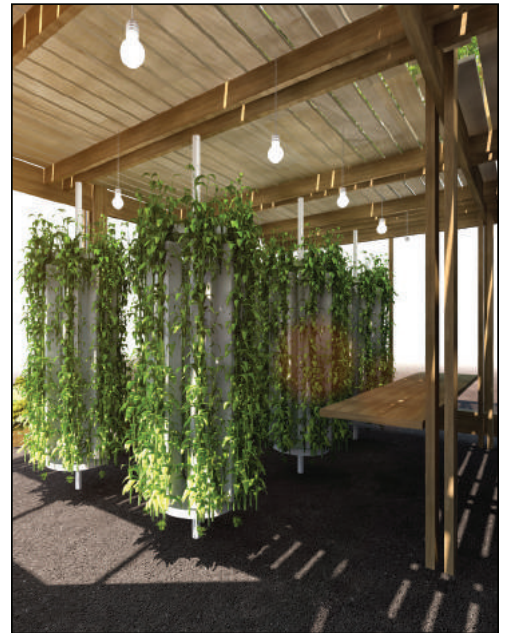
LIBRARY

COMPOST



HARLEM GROWN URBAN FARMING

We continue to support the development of the next edition of this urban farming community in the Harlem neighborhood in New York. We have been working with the client team and the New York City Department of Buildings in zoning and permitting issues for the implementation of the master plan for their farm on 127th Street. We look forward achieving the finished plan by the start of the planting season in 2018.



CLASSICAL CHARTER SCHOOL



We have been providing owner's representation services for their new school building being erected in the Mott-Haven section of The Bronx. The 70,000 square foot structure is scheduled to open in the late fall 2017, and will be home to over 400 scholars from Kindergarten to 8th Grade.

FROM OUR CLIENTS

Recovery for me was a nightmare, I had no idea where to turn or what to do. NY Rising was not much help at all. I was then put in touch with a case manager through Catholic Charities, who told me to contact The Elevated Studio.

Once I was put in touch with The Elevated Studio it was like all my problems were solved. They sat down with me, and we discussed what I needed. The Elevated Studio then devised a plan of action, and we moved forward to rebuild. I could not have done this without them, their guidance was invaluable.

Thank You!

--Anne





As a person with a disability, I discovered a number of things being in a federal named disaster area. The storm doesn't discriminate. It cares not about your race, religion, sexual orientation or whether you like mustard or ketchup on a hot dog. We are equally leveled to the same fear and resolve to return. It is after the storm when those of us with a functional need learn once again systems aren't designed to help. They're flawed at many levels that make even the most stoic crumble in anxiety and anger. There's little communication as those of us that need to know are left to feign for ourselves. Groups you once donated money to are useless as they too have new lessons to learn. I became a warrior for others. It kept me sane. Somewhere on my Disaster Trek I met others who knew being in a devastating incident would not be over in a week. This is a long haul. It isn't for the weak. Unfortunately, storms take more than property. We want our lives back. It takes too many months to realize that entire communities will need to change everything. How do we prepare for our new future? This is when you meet Brian Baer & Susan Myers, and take your first breath that doesn't hurt your broken body.

After meeting with The Elevated Studio, I was able to become a person, not a victim of the storm. Not a victim of circumstances out of my control. I saw myself returning to not a house, but a home. Drawings of the spaces I will live in again. Raised above the water line, I shall no longer shudder at the sound of wind but open a window and let a breeze flow through the new safe space. This has not been an easy journey. We are at the 5-year anniversary of Sandy and my city is a map of houses in repair and despair. If not for the professionalism, knowledge and empathy of The Elevated Studio, I try not to think of where I would be today if they weren't here.

-- Liz

My Sandy recovery, prior to working with The Elevated Studio, was discouraging, heartbreaking and honestly, terrifying. After being taken advantage of by unscrupulous contractors & architects all trying to get money, it was a relief & refreshing to meet Brian Baer.

The Elevated Studio's involvement has meant everything in my Sandy recovery. It's a place where you don't have to worry anymore. I am truly grateful to Brian Baer with his team, Susan Myers and Danielle Haas. Thank you all.

-- Nancy





OUR FUTURE

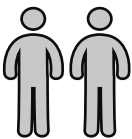
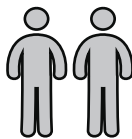
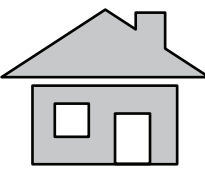
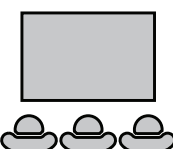



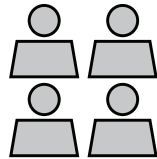
Moving forward, we inspire to make a significant impact on communities struggling to recover from a disaster, prepare for climate events, or provide a more appropriate place to grow their community. Our goals include:

- Develop Long-term Recovery program supporting:
 - 2015/16 Extreme flooding in West Virginia
 - 2016 Extreme flooding in Louisiana
 - 2016 Hurricane Matthew in North & South Carolina
- Promotion of CEDAR Initiative throughout New York State as well as other jurisdictions that require rapid assessments post-disaster
- Increase the number of Civic Works projects to serve diverse communities in need
- Co-author an institutional knowledge report in preparation for the 5-year anniversary for superstorm Sandy.



BY THE NUMBERS

Over the two years The Elevated Studio has had a positive impact towards the betterment of those that we have served. A look at our impact over the last 24 months can be seen as:

 26,000+ Community members served 		
 750+ Individual property owners consulted	 50+ Recovery forums, with an average attendance of 50 individuals	 98,000 Miles driven by our staff (12 times around the Earth's equator)
 180+ Design professionals and 600+ disaster case managers trained in resilience and sustainability	 250+ Design reviews	 100+ Partnership recovery meetings attended


Our finances have shown significant improvement from last fiscal year to this.

With the selection as a service provider for the GOSR programs, our expenses increased 50% from 2015, while our income increased 250% over that same period. We are ever conscious of the volatility of the physical and political landscape that affects our culture. We strive for efficiency in our work so that our financial resources can be stretched farther; empowering us to assist more individuals and communities in their need for crisis resolution.

	FY 2015	FY 2016
Income		
Design Income	\$ 109,870.00	\$ 287,240.00
Sandy Anniversary donations	\$ 6,004.00	\$ 8,550.00
Grants	\$ -	\$ 5,000.00
Totals	\$ 115,874.00	\$ 300,790.00

Expenses		
Consulting Engineers	\$ 30,000.00	\$ 64,475.00
Insurance Expenses	\$ 6,107.00	\$ 8,426.20
Fundraising Expenses	\$ -	\$ 945.35
Marketing Expenses	\$ 520.00	\$ 344.51
Office Expenses (general)	\$ 17,652.57	\$ 9,277.86
Payroll Expenses	\$ 61,313.08	\$ 171,432.85
Rent Expenses	\$ 8,721.85	\$ 10,500.00
Travel Expenses	\$ 4,850.14	\$ 6,290.68
Totals	\$ 129,164.64	\$ 271,692.45

ARCHITECTURE
HAS GLOBAL
APPLICATIONS...



When we think of how individuals and families live their lives, they create the space that they need by building or buying a place to live, love, and grow. **Architecture, the combination of art and science, produces this space for people and communities to come together.** It is invaluable to have well thought out buildings to create positive, nurturing environments for us to thrive. We feel that our solutions are the backbone to support our clients' and their communities' ability to thrive and be responsible citizens of the world.

THANK
YOU



We are grateful for so many people, organizations and opportunities.

Our clients: We are humbled by the work that we do with all of our clients and the neighborhoods we work in. Without you, our mission could not be fulfilled, our work theoretical, and the solutions not realized. Thank you.

Our funders: We are deeply grateful for your generous support over the past years. Without your support we could not fill our gaps in operations, or provide the services to our at-risk clients in need of our services. For your belief in us, we thank you.

Our partner organizations: We are constantly encouraged and inspired by the partnerships we have made throughout the region, and look forward to our and their continued successes. Thank you
The jurisdiction partners: At the local, state and federal level...You folks get the claw end of the hammer at times, but we appreciate your guidance, partnership and championing our efforts in your world. Thank you.

Our board: Our dedicated, all-volunteer board of directors are un-sung heros at The Elevated Studio. They have guided us through transitions from our freshman to our sophomore year; challenged us to serve broader; care deeper and more passionately; and support our mission without question. Thank you.

Our staff: Without our staff, we could not exceed our goals set at the beginning of the year; provide the services that we do to our constituency; or achieve the vision that we set forth two years ago and continue to support our mission. Your efforts do not go unnoticed. We are grateful and appreciative of all you do. Much love, respect and gratitude.

Thank you.

WE SEE A
BEAUTIFUL PLACE...

