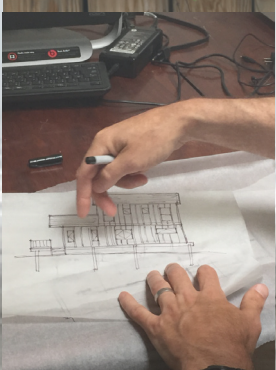


THE ELEVATED STUDIO



WHO WE ARE

We are an architecture nonprofit, one of the few, that seeks to promote social equality by expanding access to values-driven design that helps individuals and communities achieve economic and physical resilience and sustainability.

WHAT WE DO

Currently, we are focusing on the recovery efforts to homeowners and communities post- Sandy. We work in all the regions receiving Community Development Block Grant - Disaster Relief (CDBG-DR) funds, including the greater New York City area, Long Island, and New Jersey. We work with homeowners receiving federal grants on a fee-for-service basis to assist them in all stages of the design and construction process. We work with local officials and communities to assist in comprehensive recovery, aiding in planning and policy recommendations.



OUR MISSION is to promote social equality by expanding access to values-driven design that helps individuals and communities achieve economic and physical resilience and sustainability.

OUR VISION

We believe that every member of community should have access to and benefit from design excellence.

We believe that social, economic, and physical resilience and sustainability are intertwined and within reach to all.

By educating professionals, we empower those who are trained to lead a community towards excellence.

By educating the property owner, we empower those directly affected to make wise and appropriate decisions towards their environment.

By collaborating with like-minded agencies, we share ideas to create a larger network of professionals to support the communities that we work in.

By engaging government agencies, we share the ideas generated by the residents and businesses of their jurisdiction that aim to implement the desires and needs of the community.

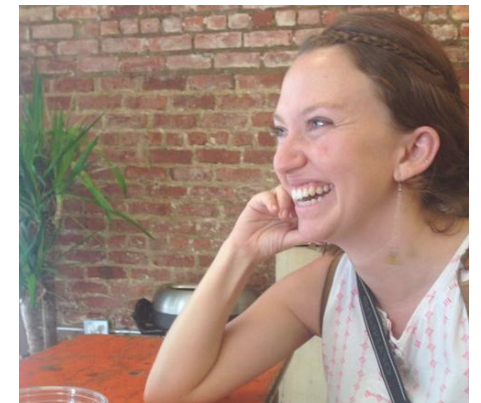
The goal is to renegotiate the relationship between residents, their communities, and the built and natural environment in a timeless way. We seek a solution that employs education and collaboration to elevate individuals and communities to achieve excellence.



BRIAN BAER is a licensed architect with three decades of experience implementing sustainable, community-aided design solutions for educational, cultural, civic, and non-governmental agency projects across the United States. Deftly combining versatile leadership, design, and managerial skills, Mr. Baer has collaborated with a wide variety of constituencies to bring consensus and success to the design and building process. He is a licensed architect in several states, is a LEED accredited professional, and certified by the National Council of Architectural Registration Boards (NCARB). Before forming The Elevated Studio, Inc. and serving as the Executive Director, Mr. Baer was the Regional Program Manager of the New York office of Architecture for Humanity, an international charity that closed its

doors at the end of 2014. In that capacity, Mr. Baer did much of the same disaster recovery and preparedness work and advocacy that is currently performed by The Elevated Studio. Mr. Baer received his architecture degree from The Catholic University of America (B.S. Architecture & Urban Planning) in Washington D.C. He has practiced as an architect in Washington, D.C., Seattle, Boston and New York.

LILA TEDESCO is an architectural designer in the process of licensure. Over her career, she has integrated a dedication to human rights into design, sustainability, and disaster recovery. Over the past 10 years, she has worked with Southface Energy Institute, Amnesty International, and POP Jewelry Collective, earning a unique breadth of skills. She has worked with both local and international nonprofits to coordinate builds with communities and student groups, using design as a tool for service. Before forming The Elevated Studio, Inc. and serving as the Director of Programs, Ms. Tedesco was employed by the New York office of Architecture for Humanity, where she did similar disaster recovery, preparedness work, and advocacy...Architecture).



She holds degrees from the University of Georgia (B.A., International Affairs & Human Rights), the Pratt Institute (Master of Architecture), and Columbia University in the City of New York (M.S., Advanced Architecture Degree: Global Cities).



The Elevated Studio is structured into two studios: one that focuses on **recovery**, and one that focuses on **civic works**.

DISASTER RECOVERY

We believe that architects and other allied design professionals have a **moral and professional obligation** to be collaborative leaders in disaster recovery. While we are generally last responders that enter the disaster landscape (typically 3-6 months after response starts); we do become active during the response and relief efforts, helping communities assess the damaged environment and prepare for recovery. It is our duty to reconstruct the built environment responsibly, resiliently, sustainably; guiding the communities we work with to become better and more prepared for future events. Our experience highlights the fact that the vulnerable populations of where we live are affected the most in disasters. Disasters often provide unique opportunities to identify and propose corrective measures to benefit our built environment and its relationship with nature. With the reality of climate change, these events and the necessary precautions will become ever more important. We use design to provide timeless solutions that proactively prepare communities for the future.

We believe that design is a tool to be used as a form of positive service to a community in need; what we fondly refer to as **humanitarian architecture**. We believe that the intertwining of social connectedness, positive economic growth, and a supportive built environment creates the trifecta that our communities need to thrive. A measurement of this achievement can be found in the civic spaces of the built environment. It is found in the government and non-government offices; in the community centers, the schools, the public facilities, and the health centers...all are necessary to increase the vitality of the community. The design professional should be intentional in providing those spaces and ensure they are inherently positive to the people using them. If these spaces have been damaged, they need to be recovered. If these spaces do not exist, they need to be built. If these spaces are underutilized, they need to be enhanced. Our role in the development of civic spaces is a local and global task, one that we will follow where it is needed.

CIVIC WORKS



CURRENT PROJECTS

We are currently focusing on the recovery efforts for homeowners and communities post-Sandy. We work in all the regions receiving Community Development Block Grant - Disaster Relief (CDBG-DR) federal funds, including the greater New York City area, Long Island, and New Jersey. We work with homeowners receiving federal grants on a fee-for-service basis to assist them in all stages of the design and construction process. We work with local officials and communities to assist in comprehensive recovery, aiding in planning and policy recommendations.

Architecture has global applications. Both the disaster recovery studio as well as the civic works studio are needed nationally and internationally. We are looking to expand both studios in the upcoming years. For disaster recovery, we must follow its unpredictable path. We are looking to assist the State of West Virginia with a bridge rebuilding project for the flooding that occurred in the spring of 2015; California for the fires that occurred in the summer of 2015, and the Carolinas for historical flooding due to Hurricane Joaquin. We have had initial conversations with AmeriCares on developing programs to design new medical facilities abroad and to make existing medical facilities accessible to all. We have spoken with the Shinnecock nation to provide workforce training program that would make the community more economically sustainable and physically resilient. We look forward to upcoming opportunities to assist communities to achieve a greater resilience and sustainability.



IMAGE: RANDY PENCH/THE SACRAMENTO BEE VIA AP/ASSOCIATED PRESS

DESIGN

We are one of the few nonprofit design organizations that can offer architectural services on a fee-for-service basis. We are the only design organization working on Hurricane Sandy recovery.

MANAGEMENT

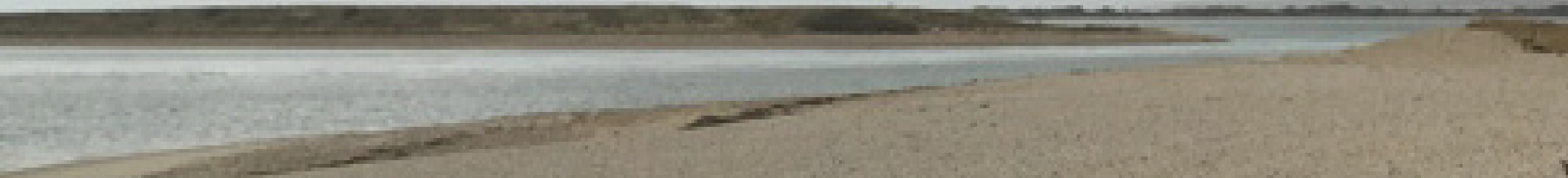
Construction administration is included in our scope of services for all our clients. By seeing our clients through certificate of occupancy, we help to avoid unforeseen expenses during construction.

EDUCATION

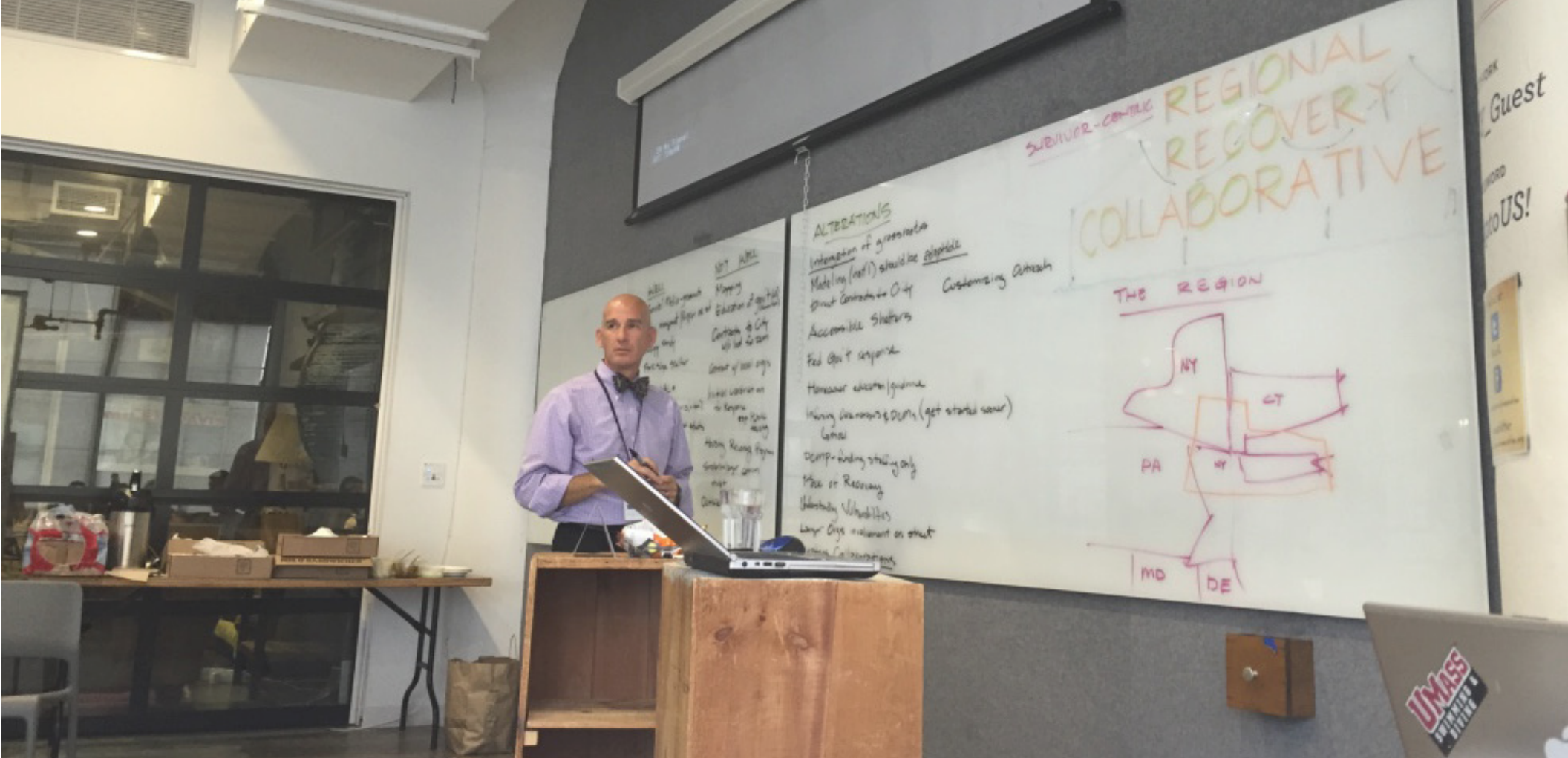
Through community charrettes, REDC clinics, and educational lecture series for residents, case managers, and local jurisdictions, we aim to reach a larger population than our clients.

ADVOCACY

With the reality of climate change, it is imperative that we plan for the future. We advocate for resilient policies that consider how climate change will affect the region.







The reality of climate change means that natural disasters will continue to affect coastal communities. We must begin now to develop and enact preventive measures, what we call “**procovery**,” an absolutely crucial component to recovery. We must address disasters reactively and proactively, which requires regional collaboration. We have been working with all the actors in recovery in the Northeast region to document best practices as well as ongoing obstacles and concerns. Preventive measures must be implemented at all levels, which includes government, local jurisdictions, nonprofits, and volunteer organizations in the form of policy and education to both communities and leaders.

ADVOCACY AND REGIONAL PLANNING

RESILIENCE THROUGH EDUCATION AND DESIGN CLINIC (REDC)

We developed the REDC model as a three-day clinic hosted in communities affected by disaster. The clinic has three stages. First, we solicit local design professionals to donate their time. Prior to the clinic, we host a training on FEMA guidelines and resiliency. The second phase pairs design professionals with local residents. The clinic offers free consultations to all attendees, providing guidance on how to dive into the design process. The final phase is funded through grant assistance. We use a scorecard to choose the residents that are most vulnerable. They receive gap funding and professional assistance. We manage this process and oversee all players through design and construction. We have hosted this clinic in Seaside Heights, NJ and a version in the Rockaways and Red Hook, Brooklyn.





ACCESSIBILITY & ELEVATION

Post-Sandy, the built environment of the coastline as well as residents' relationships with their homes has significantly evolved. Elevations make salient many concerns for accessibility and universal design that compliment growing needs of a population that ages in place. It becomes a design professional's charge as educator and "expert" to encourage the resident to plan for accessibility for themselves, their visitors, and for any future inhabitants over the course of both their lives and the life of the home. The series will address all audiences that play a role in promoting accessibility through the lens of design including the client, architect, and local jurisdiction.

HOLISTIC & COMPREHENSIVE RECOVERY

Social services are an integral part of the post-disaster landscape. With so many personal and individual situations at hand, clients are in need of more than just repairs to rebuild their home. Clients need to repair and rebuild their lives. Through the use of **Client Advocates**, we have been successful in guiding our clients to the appropriate resources which have proven to be vital to the success of their recovery. These resources vary from mortgage and legal assistance to referrals mental health programs. Having someone for the client to go to that is directly connected to their design professional provides the client with a holistic approach to recovery.



CLIENT BIOGRAPHIES

MUCH OF WHAT WE DO IS ROOTED IN WORKING WITH OUR CLIENTS IN A PARTNERSHIP THAT IS COLLABORATIVE IN NATURE AND DRIVES THE SUCCESS OF OUR WORK.

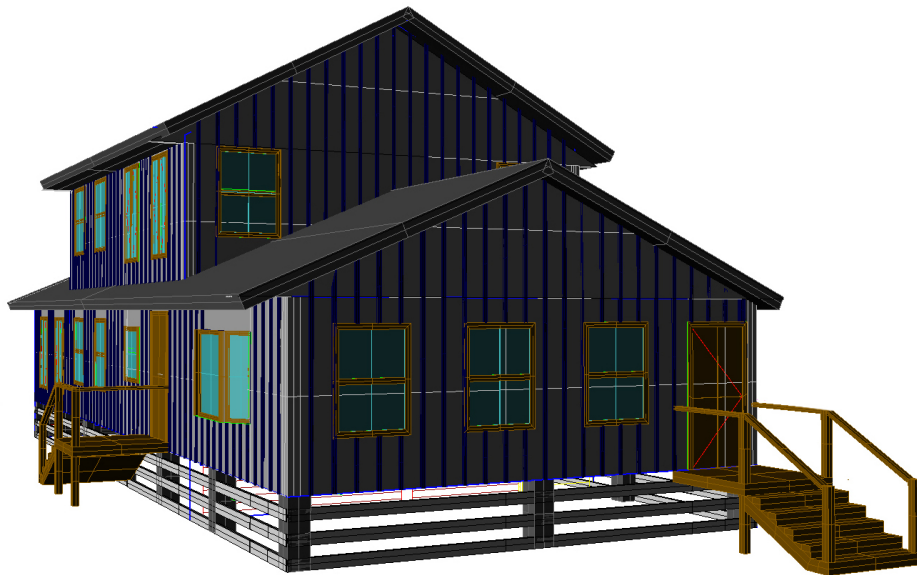




The Z.s' spiral staircase was where they took every Christmas card photo. They raised four kids in the home, all of whom are now married, and began to see it filled again with grandkids. Then Sandy struck. A storm surge came in through their front door, diagonal into their living spaces on the first floor. While they managed to have seaweed on their fireplace, the china cabinet sheltered by the swing of the door remained untouched. Not a piece moved, and even the dust circles remained. The home has since been deemed a rebuild. We have put the staircase at the core of our design to allow the Z's not only to rebuild but to renew their sense of home.



P.C.'s home is situated behind the family business her brother owns on the Shinnecock Indian Reservation. While her home primarily saw severe damage by driving rain and heavy winds, the soil composition under her home had seriously compromised the structural integrity of the foundation. A slow-growing sinkhole formed, causing the foundation to collapse for the majority of the length of the home. What was once considered a repair project, has now been elevated to demolition of the existing home and a full reconstruction.





C.S.'s situation struck us at the core as soon as we met her. She was living in what used to be a fishing shack with no other place to call home. When we met her in July 2014, she had been living in the home since Sandy without proper plumbing and electricity and no heat at all. Due to legal complications with her property, she was unable to receive government assistance. We worked with a contractor who generously donated labor and materials, and together we put in insulation and proper and safe flooring. We stocked the home with new doors and windows as well as an electric heater. Working with her disaster case manager, we worked with NECHAMA, a Jewish disaster response organization, to secure another grant to install a proper kitchen, bathroom, and roof.





option 2 - 3rd floor



option 1 - elevation

sketches

15.06.02

SO WHAT HAVE WE DONE?



20,000+

Community Members impacted

85

Contracts Written

343

Private Property Owners Consulted

67

Design Reviews

78

Recovery meetings attended

13

National, State and Local Presentations on Recovery

500+

Disaster Case Managers Trained

125+

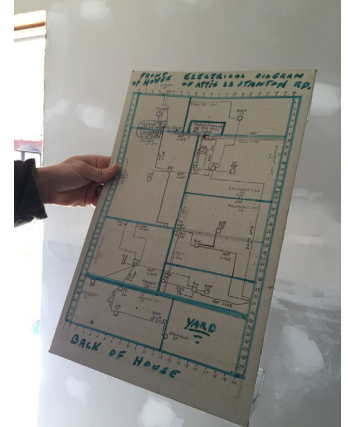
Design/Construction Professionals Trained

45,000+

Miles driven

1

Executive Directors tolerated





WE SEE A

BEAUTIFUL PLACE

INFO@THEELEVATEDSTUDIO.ORG

PHONE / 646.470.9545

FAX / 646.496.9130

WWW.THEELEVATEDSTUDIO.ORG